



BFW Engineering & Consulting
 2301 McCracken Blvd
 42001
 Telephone: 270-443-1995

BORING NUMBER B-1

PAGE 1 OF 3

CLIENT Eddyville Riverport & Industrial Development Authority
PROJECT NUMBER 25223
DATE STARTED 9/29/25 **COMPLETED** 9/30/25
DRILLING CONTRACTOR Tri-State **DRILLED BY** A. Jackson
DRILLING METHOD Casing / Open hole (CME45, track-mounted)
LOGGED BY A. Milford **CHECKED BY** M. Kaufman
NORTHING 1913502.9 **EASTING** 961175.7

PROJECT NAME ERIDA Mooring Dolphins
PROJECT LOCATION Eddyville, KY
GROUND ELEVATION 331.3 ft **HOLE SIZE** 3 inches
GROUND WATER LEVELS:
AT TIME OF DRILLING ---
AT END OF DRILLING ---
AFTER DRILLING ---

GEOTECH BH PLOTS - GINT STD US LAB 2021.GDT - 12/16/25 14:34 - C:\USERS\JABBOTT\BACON FARMER WORKMAN\BFW GEOTECHNICAL DEPARTMENT - DOCUMENTS\GINT PROJECTS\25223 - ERIDA MOORING DOLPHINS-ATHMLF-BFW.GPJ

DEPTH (ft)	GRAPHIC LOG	MATERIAL DESCRIPTION	SAMPLE TYPE NUMBER	RECOVERY % (RQD)	BLOW COUNTS (N VALUE)	POCKET PEN. & (SHEAR) (tsf)	DRY UNIT WT. (pcf)	▲ SPT N VALUE ▲			
								PL	MC	LL	
								○ FINES CONTENT (%) ○			
								20	40	60	80
0		LEAN CLAY (CL): Gray, some sand <i>Depth to mudline: 11.7 feet Elevation of mudline is based on water level elevation of 348 feet at time of drilling</i>									
5			SPT SS-1	100	0-3-2 (5)						
10		Becomes reddish brown	SPT SS-2	100	2-4-4 (8)						
15			SPT SS-3	100	3-2-1 (3)						
20			SPT SS-4	67	4-4-4 (8)						
25			SPT SS-5	100	29-20-20 (40)						
30											

(Continued Next Page)



BFW Engineering & Consulting
 2301 McCracken Blvd
 42001
 Telephone: 270-443-1995

BORING NUMBER B-1

CLIENT Eddyville Riverport & Industrial Development Authority

PROJECT NAME ERIDA Mooring Dolphins

PROJECT NUMBER 25223

PROJECT LOCATION Eddyville, KY

GEOTECH BH PLOTS - GINT STD US LAB 2021.GDT - 12/16/25 14:34 - C:\USERS\JABBOTT\BACON FARMER WORK\MAN\BFW GEOTECHNICAL DEPARTMENT - DOCUMENTS\GINT FILES\PROJECTS\25223 - ERIDA MOORING DOLPHINS-ATH\MLF-BFW.GPJ

DEPTH (ft)	GRAPHIC LOG	MATERIAL DESCRIPTION	SAMPLE TYPE NUMBER	RECOVERY % (RQD)	BLOW COUNTS (N VALUE)	POCKET PEN. & (SHEAR) (tsf)	DRY UNIT WT. (pcf)	▲ SPT N VALUE ▲			
								20	40	60	80
								PL	MC	LL	
								○ FINES CONTENT (%) ○			
								20	40	60	80
30		LEAN CLAY (CL): Gray, some sand <i>(continued)</i>	SPT SS-6	100	30-27-17 (44)			40			
35			SPT SS-7	0	3-2-1 (3)			40			
40			POORLY GRADED GRAVEL (GP): Yellowish brown	SPT SS-8	11	0-4-4 (8)			40		
45		LIMESTONE: Bluish gray, (possible boulder)	SPT SS-9	88	50/5"			40			
		No recovery: Likely clay filled void	RC Run 1	62 (0)							
50			RC Run 2	3 (0)							
55			RC Run 3	0							
				RC Run 4	0						
60				RC	0						

(Continued Next Page)

GEOTECH BH PLOTS - GINT STD US LAB 2021.GDT - 12/16/25 14:34 - C:\USERS\JABBOTT\BACON FARMER WORKMAN\BFW GEOTECHNICAL DEPARTMENT - DOCUMENTS\GINT FILES\PROJECTS\25223 - ERIDA MOORING DOLPHINS-ATH\MLF-BFW.GPJ



BFW Engineering & Consulting
 2301 McCracken Blvd
 42001
 Telephone: 270-443-1995

BORING NUMBER B-1

CLIENT Eddyville Riverport & Industrial Development Authority **PROJECT NAME** ERIDA Mooring Dolphins
PROJECT NUMBER 25223 **PROJECT LOCATION** Eddyville, KY

DEPTH (ft)	GRAPHIC LOG	MATERIAL DESCRIPTION	SAMPLE TYPE NUMBER	RECOVERY % (RQD)	BLOW COUNTS (N VALUE)	POCKET PEN. & (SHEAR) (tsf)	DRY UNIT WT. (pcf)	▲ SPT N VALUE ▲					
								20	40	60	80		
								PL MC LL 20 40 60 80					
								○ FINES CONTENT (%) ○					
								20 40 60 80					
65		No recovery: Likely clay filled void (<i>continued</i>)	Run 5										
		LIMESTONE: Bluish gray	RC Run 6	100 (100)									

Refusal at 45.4 feet.
 Bottom of borehole at 69.5 feet.



BFW Engineering & Consulting
 2301 McCracken Blvd
 42001
 Telephone: 270-443-1995

BORING NUMBER B-2

PAGE 1 OF 3

CLIENT Eddyville Riverport & Industrial Development Authority
PROJECT NUMBER 25223
DATE STARTED 10/1/25 **COMPLETED** 10/1/25
DRILLING CONTRACTOR Tri-State **DRILLED BY** A. Jackson
DRILLING METHOD Casing / Open hole (CME45, track-mounted)
LOGGED BY A. Milford **CHECKED BY** M. Kaufman
NORTHING 1913637.6 **EASTING** 961316.7

PROJECT NAME ERIDA Mooring Dolphins
PROJECT LOCATION Eddyville, KY
GROUND ELEVATION 333.7 ft **HOLE SIZE** 3 inches
GROUND WATER LEVELS:
AT TIME OF DRILLING ---
AT END OF DRILLING ---
AFTER DRILLING ---

GEOTECH BH PLOTS - GINT STD US LAB 2021.GDT - 12/16/25 14:34 - C:\USERS\JABBOTT\BACON FARMER WORKMAN\BFW GEOTECHNICAL DEPARTMENT - DOCUMENTS\GINT FILES\PROJECTS\25223 - ERIDA MOORING DOLPHINS-ATHMLF-BFW.GPJ

DEPTH (ft)	GRAPHIC LOG	MATERIAL DESCRIPTION	SAMPLE TYPE NUMBER	RECOVERY % (RQD)	BLOW COUNTS (N VALUE)	POCKET PEN. & (SHEAR) (tsf)	DRY UNIT WT. (pcf)	▲ SPT N VALUE ▲			
								PL	MC	LL	
								○ FINES CONTENT (%) ○			
								20	40	60	80
0		LEAN CLAY (CL): Yellowish brown <i>Depth to mudline: 14.3 feet Elevation of mudline is based on water level elevation of 348 feet at time of drilling</i>	SPT SS-1	100	2-2-2 (4)						
5											
10		WELL GRADED SANDY GRAVEL (GW): Yellowish brown, mostly chert	SPT SS-2	100	3-9-12 (21)						
15											
20		LEAN CLAY (CL): Gray, some sand and gravel	SPT SS-3	56	26-17-8 (25)						
25			SPT SS-4	0	11-2-1 (3)						
30		WELL GRADED GRAVEL with CLAY (GW-GC): Yellowish brown, mostly chert	SPT SS-5	44	14-8-16 (24)						
35			SPT SS-6	56	27-17-12 (29)						

(Continued Next Page)



BFW Engineering & Consulting
 2301 McCracken Blvd
 42001
 Telephone: 270-443-1995

BORING NUMBER B-2

PAGE 2 OF 3

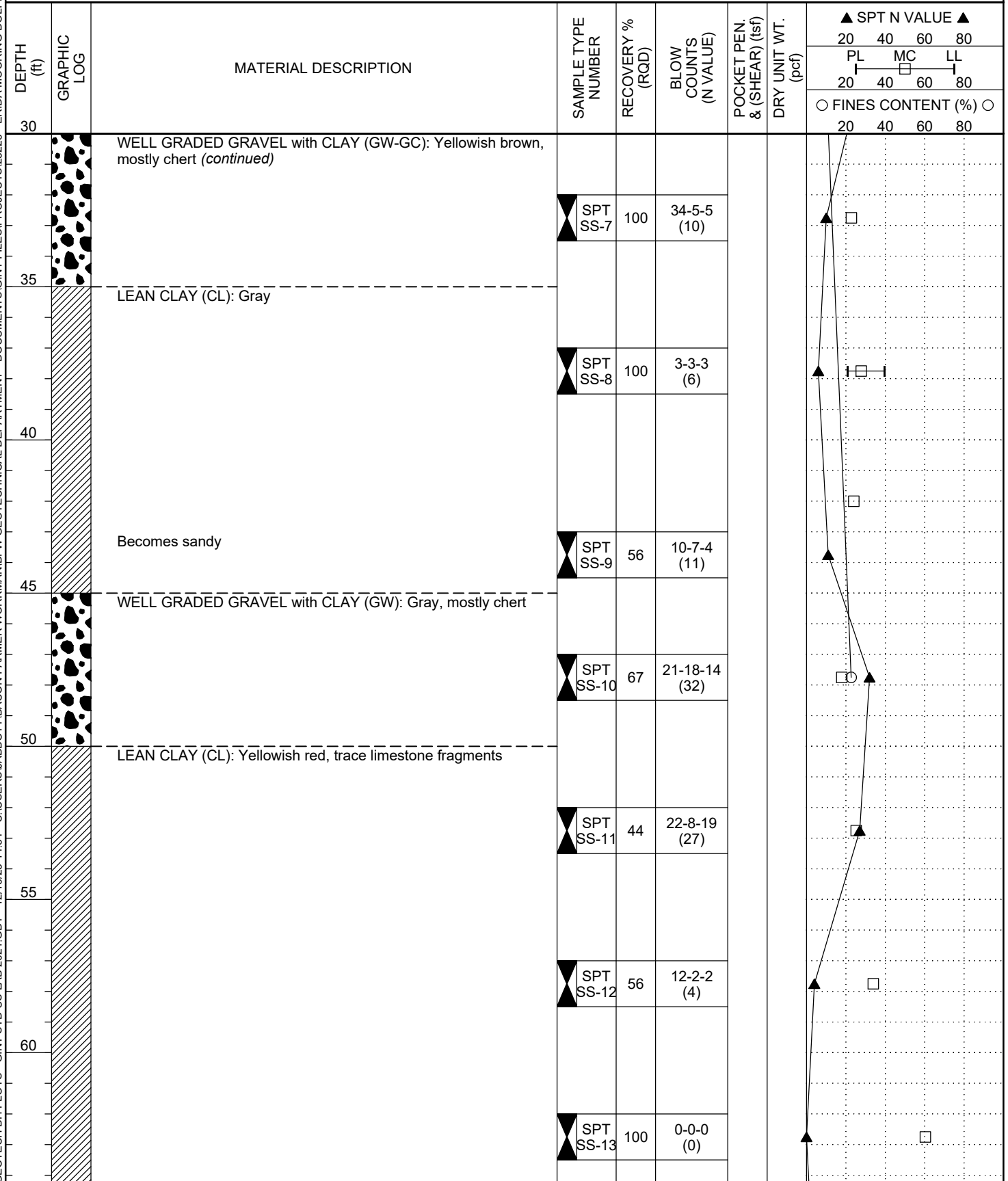
CLIENT Eddyville Riverport & Industrial Development Authority

PROJECT NAME ERIDA Mooring Dolphins

PROJECT NUMBER 25223

PROJECT LOCATION Eddyville, KY

GEOTECH BH PLOTS - GINT STD US LAB 2021.GDT - 12/16/25 14:34 - C:\USERS\JABBOTT\BACON FARMER WORK\MAN\BFW GEOTECHNICAL DEPARTMENT - DOCUMENTS\GINT FILES\PROJECTS\25223 - ERIDA MOORING DOLPHINS-ATH\MLF-BFW.GPJ



(Continued Next Page)

GEOTECH BH PLOTS - GINT STD US LAB 2021.GDT - 12/16/25 14:34 - C:\USERS\JABBOTT\BACON FARMER WORKMAN\BFW GEOTECHNICAL DEPARTMENT - DOCUMENTS\GINT FILES\PROJECTS\25223 - ERIDA MOORING DOLPHINS-ATH\MLF-BFW.GPJ



BFW Engineering & Consulting
 2301 McCracken Blvd
 42001
 Telephone: 270-443-1995

BORING NUMBER B-2

CLIENT Eddyville Riverport & Industrial Development Authority **PROJECT NAME** ERIDA Mooring Dolphins
PROJECT NUMBER 25223 **PROJECT LOCATION** Eddyville, KY

DEPTH (ft)	GRAPHIC LOG	MATERIAL DESCRIPTION	SAMPLE TYPE NUMBER	RECOVERY % (RQD)	BLOW COUNTS (N VALUE)	POCKET PEN. & (SHEAR) (tsf)	DRY UNIT WT. (pcf)	▲ SPT N VALUE ▲			
								20	40	60	80
								PL	MC	LL	
								20	40	60	80
								○ FINES CONTENT (%) ○			
								20	40	60	80
65		LEAN CLAY (CL): Yellowish red, trace limestone fragments <i>(continued)</i>	SPT SS-14	100	2-2-2 (4)						
70											

Bottom of borehole at 72.0 feet.



BFW Engineering & Consulting
 2301 McCracken Blvd
 42001
 Telephone: 270-443-1995

BORING NUMBER B-3

GEOTECH BH PLOTS - GINT STD US LAB 2021.GDT - 12/16/25 14:34 - C:\USERS\JABBOTT\BACON FARMER WORKMAN\BFW GEOTECHNICAL DEPARTMENT - DOCUMENTS\GINT FILES\PROJECTS\25223 - ERIDA MOORING DOLPHINS-ATHILF-BFW.GPJ

CLIENT Eddyville Riverport & Industrial Development Authority **PROJECT NAME** ERIDA Mooring Dolphins
PROJECT NUMBER 25223 **PROJECT LOCATION** Eddyville, KY
DATE STARTED 10/2/25 **COMPLETED** 10/3/25 **GROUND ELEVATION** 333 ft **HOLE SIZE** 3 inches
DRILLING CONTRACTOR Tri-State **DRILLED BY** A. Jackson **GROUND WATER LEVELS:**
DRILLING METHOD Casing / Open hole (CME45, track-mounted) **AT TIME OF DRILLING** ---
LOGGED BY A. Milford **CHECKED BY** M. Kaufman **AT END OF DRILLING** ---
NORTHING 1913772.3 **EASTING** 961457.7 **AFTER DRILLING** ---

DEPTH (ft)	GRAPHIC LOG	MATERIAL DESCRIPTION	SAMPLE TYPE NUMBER	RECOVERY % (RQD)	BLOW COUNTS (N VALUE)	POCKET PEN. & (SHEAR) (tsf)	DRY UNIT WT. (pcf)	▲ SPT N VALUE ▲			
								PL	MC	LL	
								○ FINES CONTENT (%) ○			
								20	40	60	80
0		LEAN CLAY (CL): Gray <i>Depth to mudline: 15 feet Elevation of mudline is based on water level elevation of 348 feet at time of drilling</i>									
5			SPT SS-1	28	0-0-0 (0)						
10			SPT SS-2	67	0-0-0 (0)						
15		Some chert gravel	SPT SS-3	67	8-2-2 (4)						
20			SPT SS-4	56	6-3-5 (8)						
25			SPT SS-5	78	10-13-26 (39)						
30			SPT SS-6	56	16-31-23 (54)						

(Continued Next Page)



BFW Engineering & Consulting
 2301 McCracken Blvd
 42001
 Telephone: 270-443-1995

BORING NUMBER B-3

CLIENT Eddyville Riverport & Industrial Development Authority

PROJECT NAME ERIDA Mooring Dolphins

PROJECT NUMBER 25223

PROJECT LOCATION Eddyville, KY

GEOTECH BH PLOTS - GINT STD US LAB 2021.GDT - 12/16/25 14:34 - C:\USERS\JABBOTT\BACON FARMER WORK\MAN\BFW GEOTECHNICAL DEPARTMENT - DOCUMENTS\GINT FILES\PROJECTS\25223 - ERIDA MOORING DOLPHINS-ATH\MLF-BFW.GPJ

DEPTH (ft)	GRAPHIC LOG	MATERIAL DESCRIPTION	SAMPLE TYPE NUMBER	RECOVERY % (RQD)	BLOW COUNTS (N VALUE)	POCKET PEN. & (SHEAR) (tsf)	DRY UNIT WT. (pcf)	▲ SPT N VALUE ▲				
								20	40	60	80	
								PL	MC	LL		
								○ FINES CONTENT (%) ○				
								20	40	60	80	
30		LEAN CLAY (CL): Gray <i>(continued)</i>										
35												
		POORLY GRADED GRAVEL (GP): Yellowish brown										
40												
45			LEAN CLAY (CL): Yellowish red, with chert gravel									
50												
55												
60												

(Continued Next Page)

GEOTECH BH PLOTS - GINT STD US LAB 2021.GDT - 12/16/25 14:34 - C:\USERS\JABBOTT\BACON FARMER WORKMAN\BFW GEOTECHNICAL DEPARTMENT - DOCUMENTS\GINT FILES\PROJECTS\25223 - ERIDA MOORING DOLPHINS-ATH\MLF-BFW.GPJ



BFW Engineering & Consulting
 2301 McCracken Blvd
 42001
 Telephone: 270-443-1995

BORING NUMBER B-3

CLIENT Eddyville Riverport & Industrial Development Authority **PROJECT NAME** ERIDA Mooring Dolphins
PROJECT NUMBER 25223 **PROJECT LOCATION** Eddyville, KY

DEPTH (ft)	GRAPHIC LOG	MATERIAL DESCRIPTION	SAMPLE TYPE NUMBER	RECOVERY % (RQD)	BLOW COUNTS (N VALUE)	POCKET PEN. & (SHEAR) (tsf)	DRY UNIT WT. (pcf)	▲ SPT N VALUE ▲		
								20	40	60
								PL MC LL 20 40 60 80		
								○ FINES CONTENT (%) ○		
								20 40 60 80		
65		LEAN CLAY (CL): Yellowish red, with chert gravel <i>(continued)</i>								
			SPT SS-14	17	4-4-4 (8)					

Bottom of borehole at 69.5 feet.

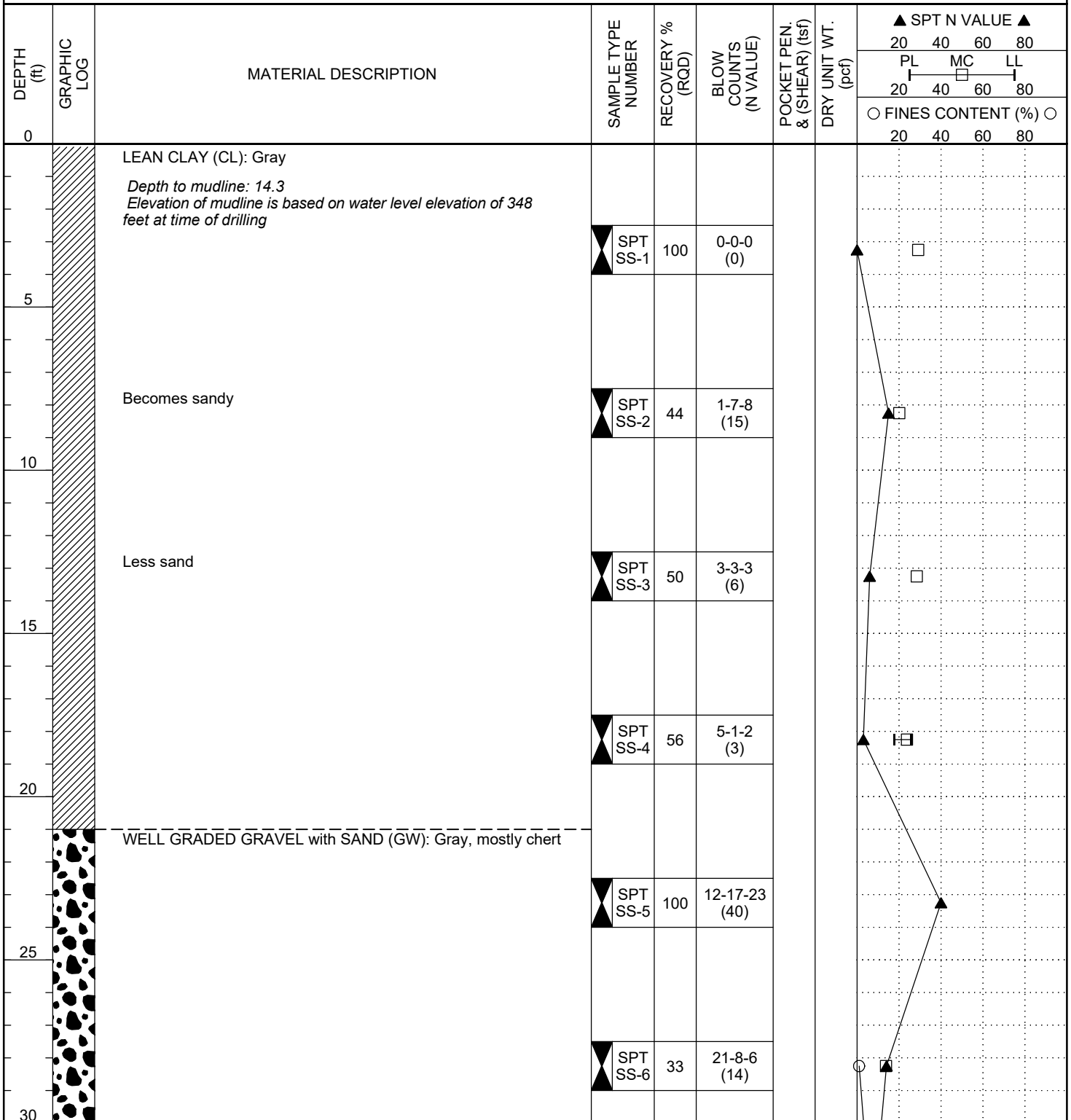


BFW Engineering & Consulting
 2301 McCracken Blvd
 42001
 Telephone: 270-443-1995

BORING NUMBER B-4

GEOTECH BH PLOTS - GINT STD US LAB 2021.GDT - 12/16/25 14:34 - C:\USERS\JABBOTT\BACON FARMER WORKMAN\BFW GEOTECHNICAL DEPARTMENT - DOCUMENTS\GINT FILES\PROJECTS\25223 - ERIDA MOORING DOLPHINS-ATH\MLF-BFW.GPJ

CLIENT <u>Eddyville Riverport & Industrial Development Authority</u>	PROJECT NAME <u>ERIDA Mooring Dolphins</u>
PROJECT NUMBER <u>25223</u>	PROJECT LOCATION <u>Eddyville, KY</u>
DATE STARTED <u>10/6/25</u> COMPLETED <u>10/6/25</u>	GROUND ELEVATION <u>333.7 ft</u> HOLE SIZE <u>3 inches</u>
DRILLING CONTRACTOR <u>Tri-State</u> DRILLED BY <u>A. Jackson</u>	GROUND WATER LEVELS:
DRILLING METHOD <u>Casing / Open hole (CME45, track-mounted)</u>	AT TIME OF DRILLING <u>---</u>
LOGGED BY <u>A. Milford</u> CHECKED BY <u>M. Kaufman</u>	AT END OF DRILLING <u>---</u>
NORTHING <u>1913906.9</u> EASTING <u>961598.7</u>	AFTER DRILLING <u>---</u>



(Continued Next Page)

GEOTECH BH PLOTS - GINT STD US LAB 2021.GDT - 12/16/25 14:34 - C:\USERS\JABBOTT\BACON FARMER WORK\MAN\BFW GEOTECHNICAL DEPARTMENT - DOCUMENTS\GINT FILES\PROJECTS\25223 - ERIDA MOORING DOLPHINS-ATH\MLF-BFW.GPJ



BFW Engineering & Consulting
 2301 McCracken Blvd
 42001
 Telephone: 270-443-1995

BORING NUMBER B-4

CLIENT Eddyville Riverport & Industrial Development Authority **PROJECT NAME** ERIDA Mooring Dolphins
PROJECT NUMBER 25223 **PROJECT LOCATION** Eddyville, KY

DEPTH (ft)	GRAPHIC LOG	MATERIAL DESCRIPTION	SAMPLE TYPE NUMBER	RECOVERY % (RQD)	BLOW COUNTS (N VALUE)	POCKET PEN. & (SHEAR) (tsf)	DRY UNIT WT. (pcf)	▲ SPT N VALUE ▲				
								20	40	60	80	
								PL	MC	LL		
								○ FINES CONTENT (%) ○				
								20	40	60	80	
30		WELL GRADED GRAVEL with SAND (GW): Gray, mostly chert (continued)										
		LEAN CLAY (CL): Gray, with chert gravel	SPT SS-7	67	9-3-4 (7)							
35		WELL GRADED GRAVEL with CLAY (GW-GC): Red	SPT SS-8	89	35-25-30 (55)							
40		NO RECOVERY: Soil is likely lean clay with chert gravel	SPT SS-9	89	26-23-40 (63)							
45		Casing bit broke - advanced hole with core barrel to 72.5 feet - no rock present	RC Run 1	0								
50			RC Run 2	0								
55			RC Run 3	0								
60			RC Run 4	0								

(Continued Next Page)

GEOTECH BH PLOTS - GINT STD US LAB 2021.GDT - 12/16/25 14:34 - C:\USERS\JABBOTT\BACON FARMER WORKMAN\BFW GEOTECHNICAL DEPARTMENT - DOCUMENTS\GINT FILES\PROJECTS\25223 - ERIDA MOORING DOLPHINS-ATH\MLF-BFW.GPJ



BFW Engineering & Consulting
 2301 McCracken Blvd
 42001
 Telephone: 270-443-1995

BORING NUMBER B-4

CLIENT Eddyville Riverport & Industrial Development Authority **PROJECT NAME** ERIDA Mooring Dolphins
PROJECT NUMBER 25223 **PROJECT LOCATION** Eddyville, KY

DEPTH (ft)	GRAPHIC LOG	MATERIAL DESCRIPTION	SAMPLE TYPE NUMBER	RECOVERY % (RQD)	BLOW COUNTS (N VALUE)	POCKET PEN. & (SHEAR) (tsf)	DRY UNIT WT. (pcf)	▲ SPT N VALUE ▲								
								20	40	60	80					
								PL		MC	LL					
								○ FINES CONTENT (%) ○								
								20	40	60	80					
65		NO RECOVERY: Soil is likely lean clay with chert gravel <i>(continued)</i>	RC Run 5	0												
70			RC Run 6	0												

Bottom of borehole at 72.5 feet.